



# UP THE CREEK GREENWICH

0208 8584581 | [UP-THE-CREEK.COM](http://UP-THE-CREEK.COM) | [CONTACTUS@UP-THE-CREEK.COM](mailto:CONTACTUS@UP-THE-CREEK.COM)

302 CREEK ROAD, LONDON, SE10 9SW

# UP THE CREEK GREENWICH

Up the Creek is a well established London landmark, situated in the heart of the historic Royal Borough of Greenwich, directly opposite Canary Wharf. With a 275 seat capacity, 2AM license, full air conditioning and a top of the range kitchen; it is an ideal location to host team building events, conferences, music shows, company days out, private parties, weekly club nights, selected charity events and yes, even weddings.

Up the Creek is quite possibly the most unique and quirkiest venue in the South East with an intimate, cosy atmosphere. We have also been used as a location for many films/ tv and radio programmes.

The venue has an experienced management team who will work with you to create a bespoke plan, helping to organise and overseeing all aspects of your event.

For further information, please phone **0208 8584581**

or email [contactus@up-the-creek.com](mailto:contactus@up-the-creek.com)

# SOME PEOPLE WE'VE WORKED WITH

**BBC**  
**Comedy**

**QTV**

**BBC**  
**TWO**

**BBC**  
**RADIO**

**4**

**BBC RADIO**  
**NEW COMEDY**  
**AWARD**

**UTC**  
ARTIST MANAGEMENT

**MUSIC**  
**TRINITY**  
**LABAN**  
**DANCE**

**STUDENTS'**  
**UNION**  
UNIVERSITY OF GREENWICH



# THE MAIN ROOM



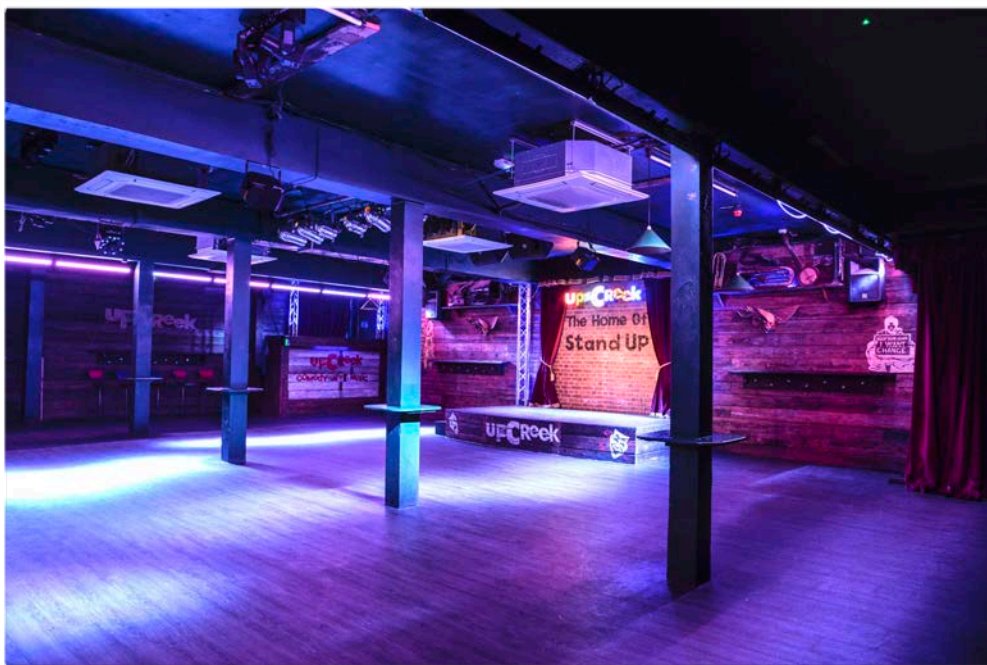
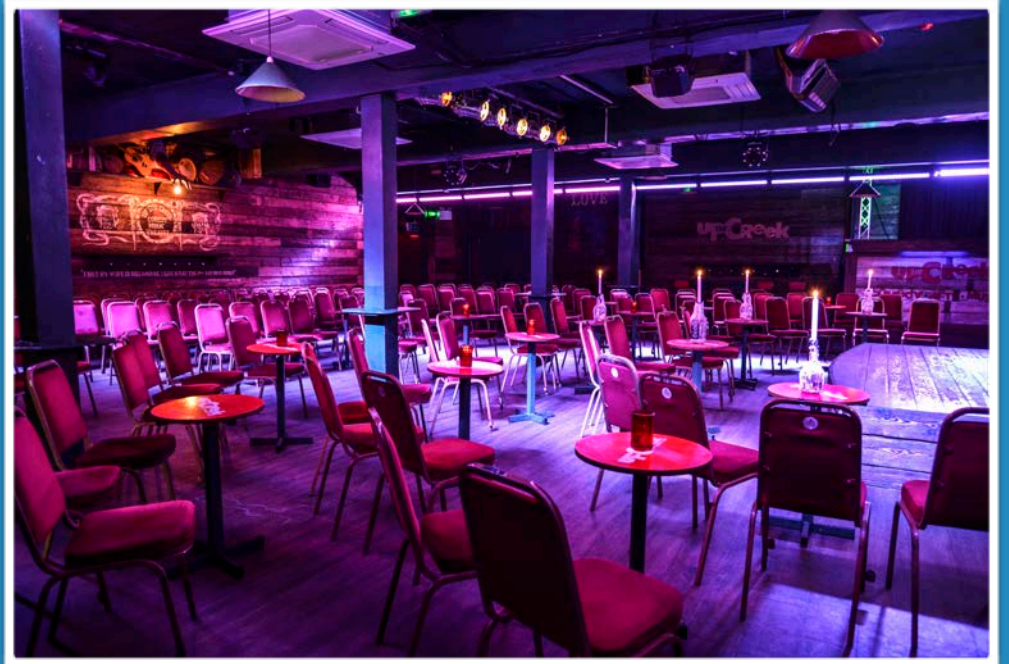
# THE MAIN ROOM

Up The Creek's main room is world famous and renowned as one of the best rooms to perform in.

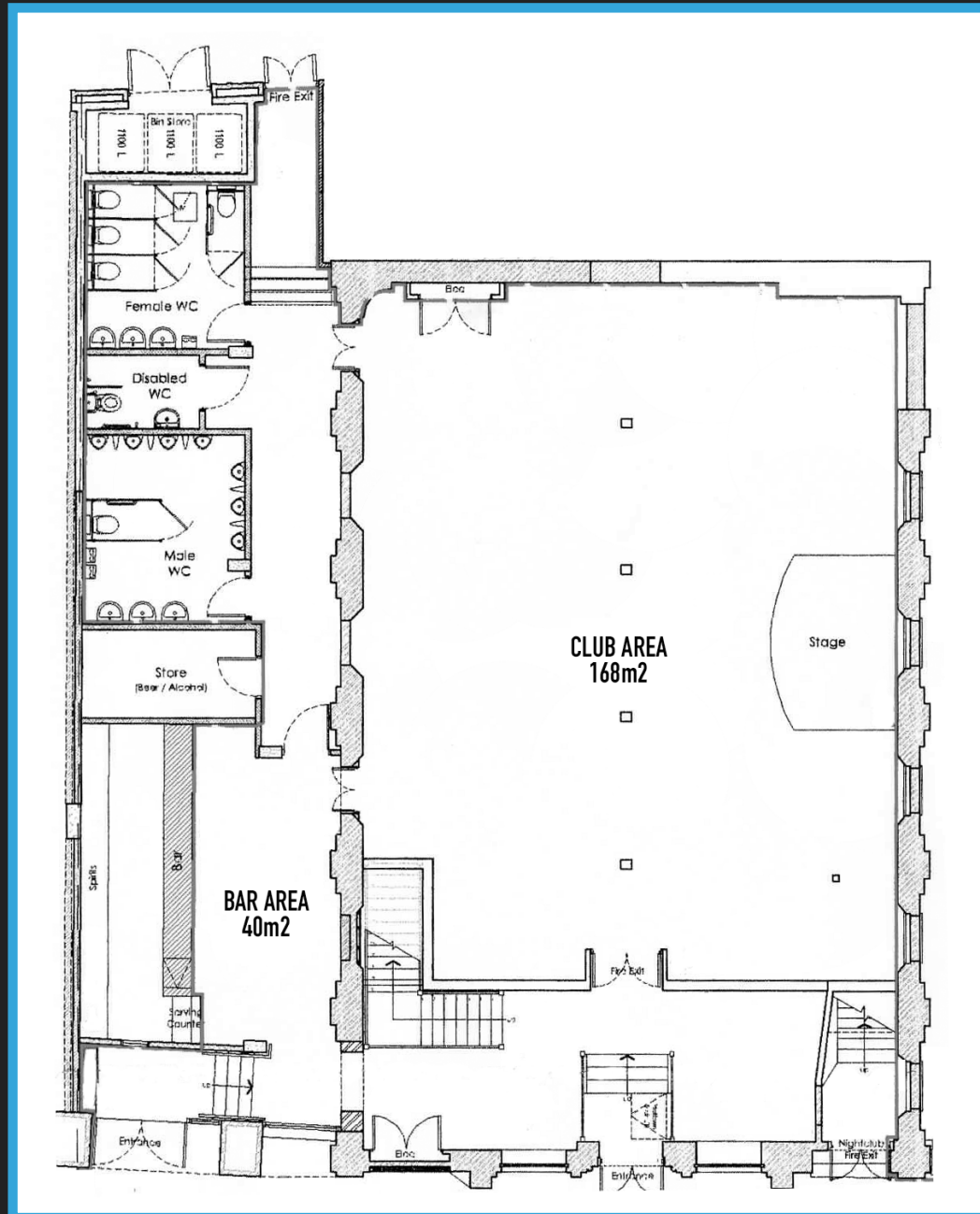
With a capacity of 275 seated audience, it's the ideal room for club gigs as well as touring shows.

It has also been used as a TV studio for '*No Such Thing As The News*' for BBC Two and a radio studio for BBC Radio 4.

The main room also has the flexibility of removing all chairs to provide a 168m<sup>2</sup> space.



# THE MAIN ROOM





# THE BAR

MORE CHARACTER

MORE CHARACTER





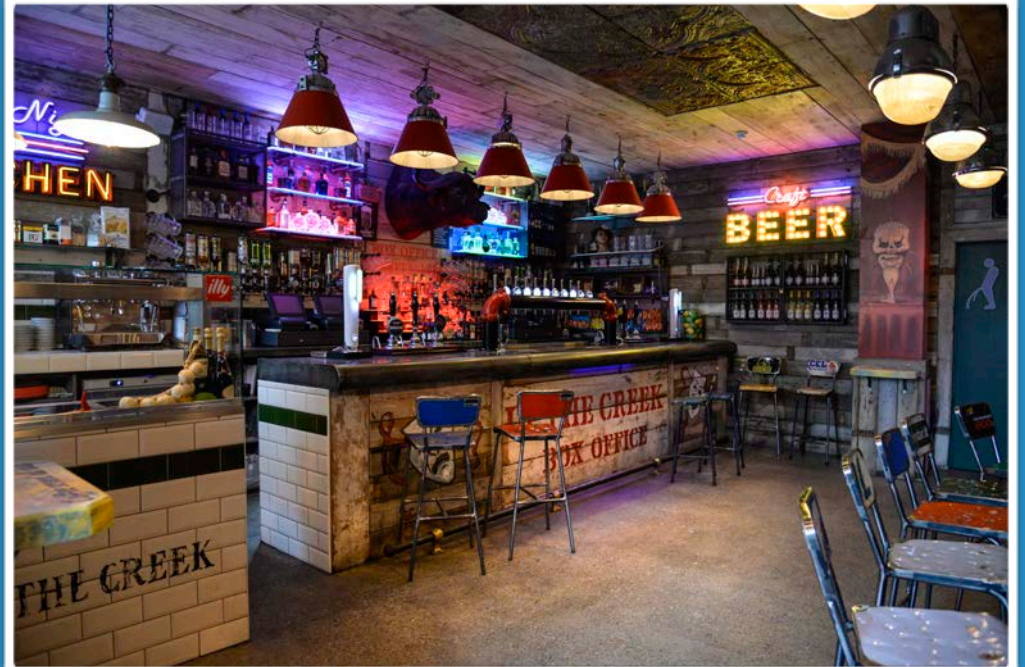
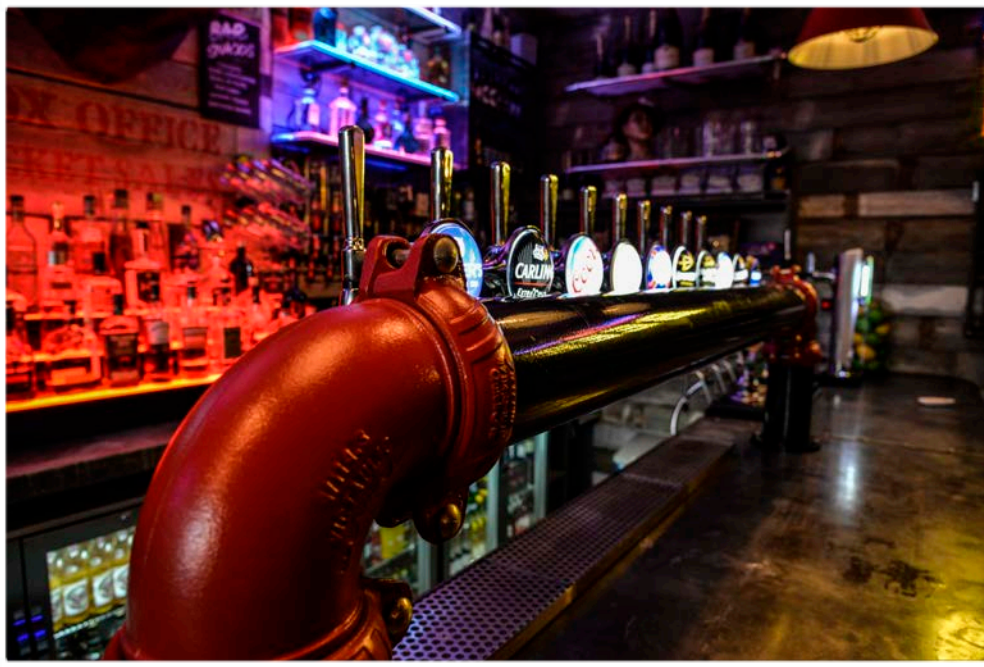
# THE BAR

Up The Creek's bar features top of the line hardware imported from America.

It also boasts an impressive selection of spirits from around the world and a large selection of draft beers/ lagers and ciders.

Our fully stocked fridges also include an impressive array of bottled beers/ ciders and wines.

No show would be complete without us providing hot snacks from our late night kitchen.





# THE STUDIO

# THE STUDIO

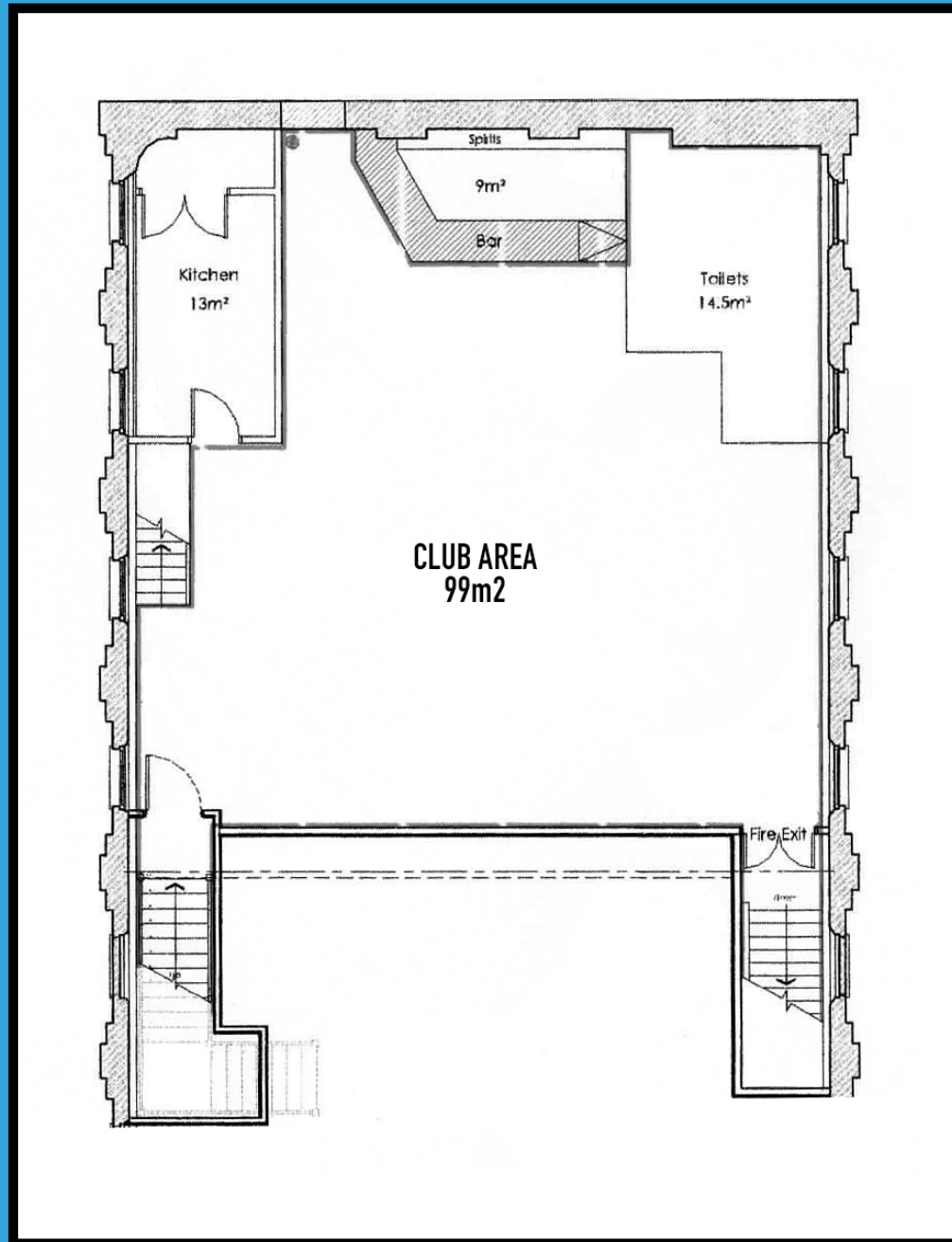
The Studio space is located on the 1st floor of the venue.

With its intimate feel, this beautiful and uniquely designed space is perfect for smaller shows or presentations.

The Studio is also available for private hire for large groups prior to the weekend's live shows, supplying you with your very own bar and staff.



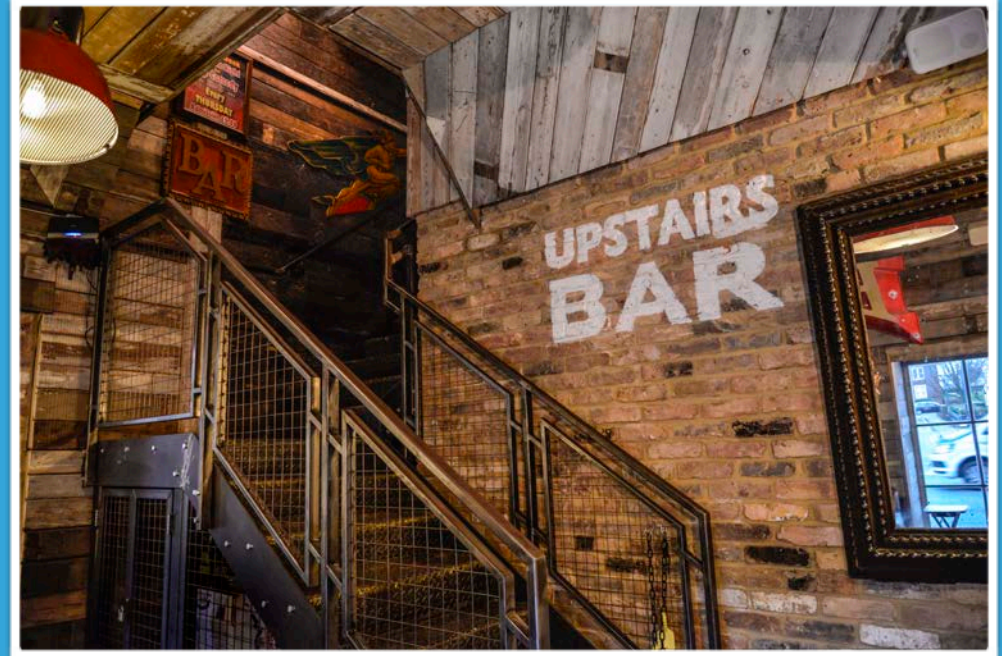
# THE STUDIO



# DOWNSTAIRS

As well as our bar downstairs, we have a cosy area to relax in night or day.

The perfect area to get some drinks pre show.



# DON'T JUST TAKE OUR WORD FOR IT

'ONE OF THE BEST PLACES  
TO SEE LIVE COMEDY'  
TIME OUT

'A MUST VISIT FOR  
COMEDY FANS'  
[LONDONTOWN.COM](http://LONDONTOWN.COM)

VOTED BEST COMEDY  
CLUB IN THE UK  
THE GUARDIAN

